

# Integrate SEL into Your RtI Framework in 9 Simple Steps

## Response to Intervention (RtI)

is all about giving students the supports they need to succeed in school. Social and emotional learning (SEL) can strengthen RtI by helping educators be more proactive at identifying students who need help and creating tailored interventions to meet their needs.

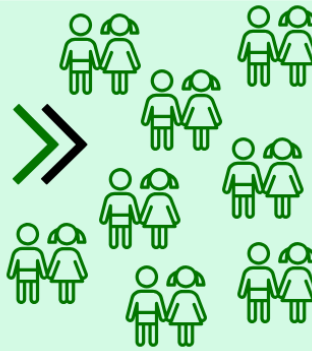
Learn how to weave SEL into your RtI model in 9 easy steps:

### Tier I: SEL for All Students

**Step 1:** Assess social and emotional competence with a quality SEL assessment like the Devereux Student Strengths Assessment (DESSA) and the DESSA-mini.

**Step 2:** Deliver consistent, high-quality SEL instruction to all students.

**Step 3:** Align SEL data with academic data, such as grades and attendance, to identify students who need additional academic and/or SEL support (Tier II).



### Tier II: SEL for Students who Need Extra Academic Support

**Step 4:** Deliver targeted and rigorous supplementary SEL instruction in small-group settings.

**Step 5:** Talk to students about their SEL data. Do they agree with it? How can they increase their social and emotional competence? Explain ways SEL can improve their academic performance.

**Step 6:** Monitor SEL progress with the DESSA-mini. Use the SEL data alongside academic data to identify students who need intensive (Tier III) support.

### Tier III: SEL for Students who Need Intensive Academic Support

**Step 7:** Provide 1:1 SEL support to help students build skills in areas where they are struggling. Establish SEL goals and create a plan to achieve them.

**Step 8:** Continue to utilize SEL data to monitor progress and make tailored adjustments to interventions as needed.



### Bonus Tip

**Step 9:** Focus on creating a strong Tier I RtI and SEL framework. The success of your entire model hinges on the strength of Tier I. An ounce of prevention is worth a pound of cure!

Aperture Education can help you better meet the needs of every student by integrating SEL into your RtI framework. [Contact us](#) to learn more.